

About the EA Process

The Environmental Assessment Process

This study is being carried out following the requirements of MTO's *Class Environmental Assessment (Class EA) for Provincial Transportation Facilities (2000)*. In accordance with these requirements, the study is being initiated as a Group 'B' project, which includes highway improvements that provide or cause a significant modification in traffic access.

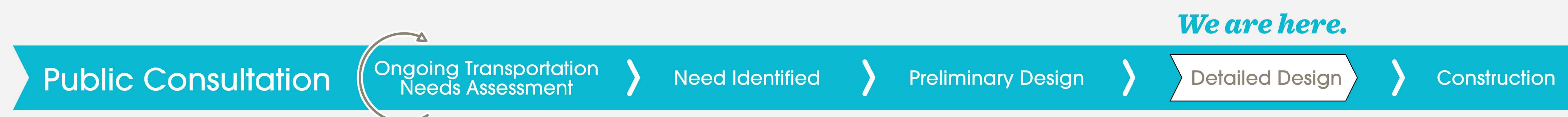
For this project we expect that temporary ramp closures will be required since we will be moving all traffic to one side of the highway while we rehabilitate the other lanes. Upon completion as a Group 'B' project, a Transportation Environmental Study Report (TESR) will be prepared.

Following the PIC, the project will be reviewed for eligibility to be stepped down to a Group 'C' project if it is determined that the project has no significant adverse environmental effects.

If the project is stepped down, a 30-day review period would be provided during which time affected parties may request the proponent to reconsider the step-down decision and leave the project as a Group 'B' classification. An Environmental Screening Document (ESD) would then be prepared and maintained on file with MTO. If the project remains a Group 'B' classification, a TESR will be prepared and made available for a 30-day public review period.

Notification of project step-down, or TESR review locations, will be published in local newspapers and mailed to those on the study mailing list.

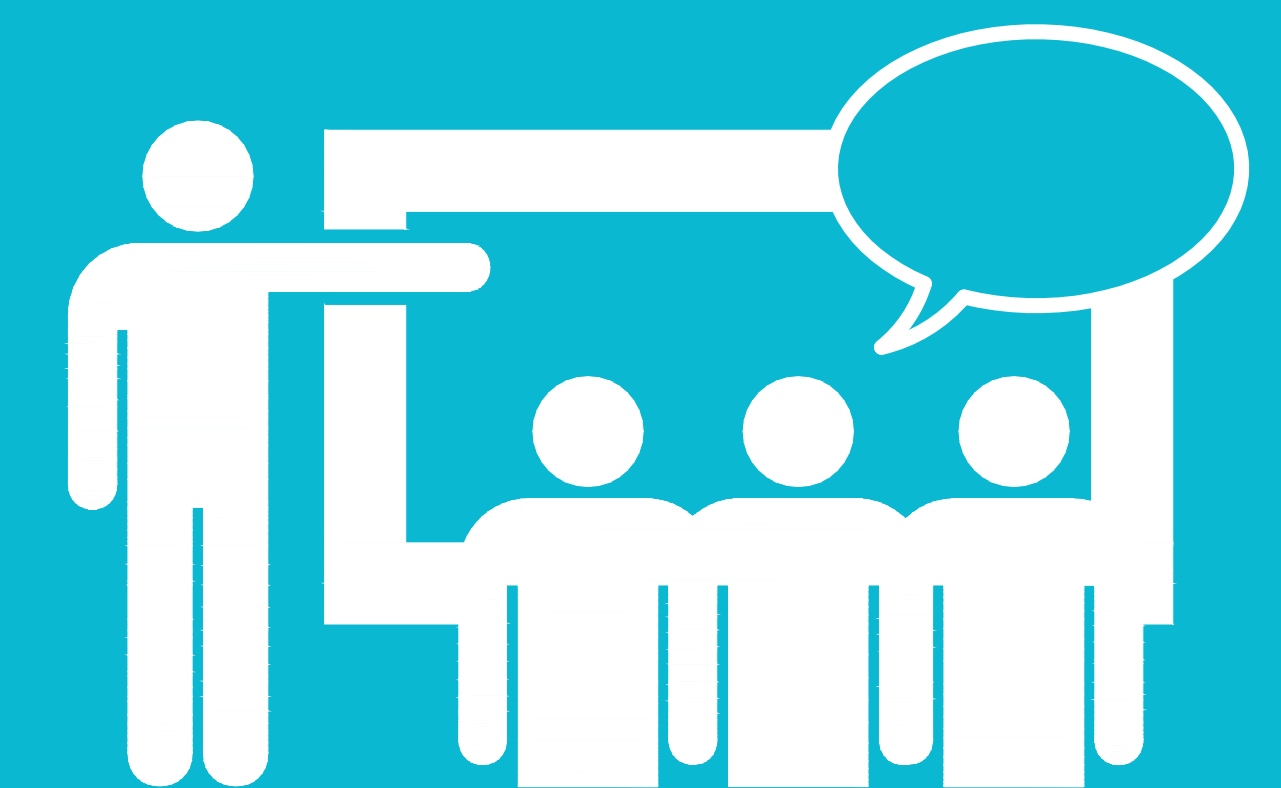
THE CLASS ENVIRONMENTAL ASSESSMENT PROCESS for GROUP 'B' PROJECTS



DETAILED DESIGN WITHIN THE ENVIRONMENTAL ASSESSMENT PROCESS



Next Steps...



Input received from this Public Information Centre will be reviewed and considered as the detailed design is finalized.